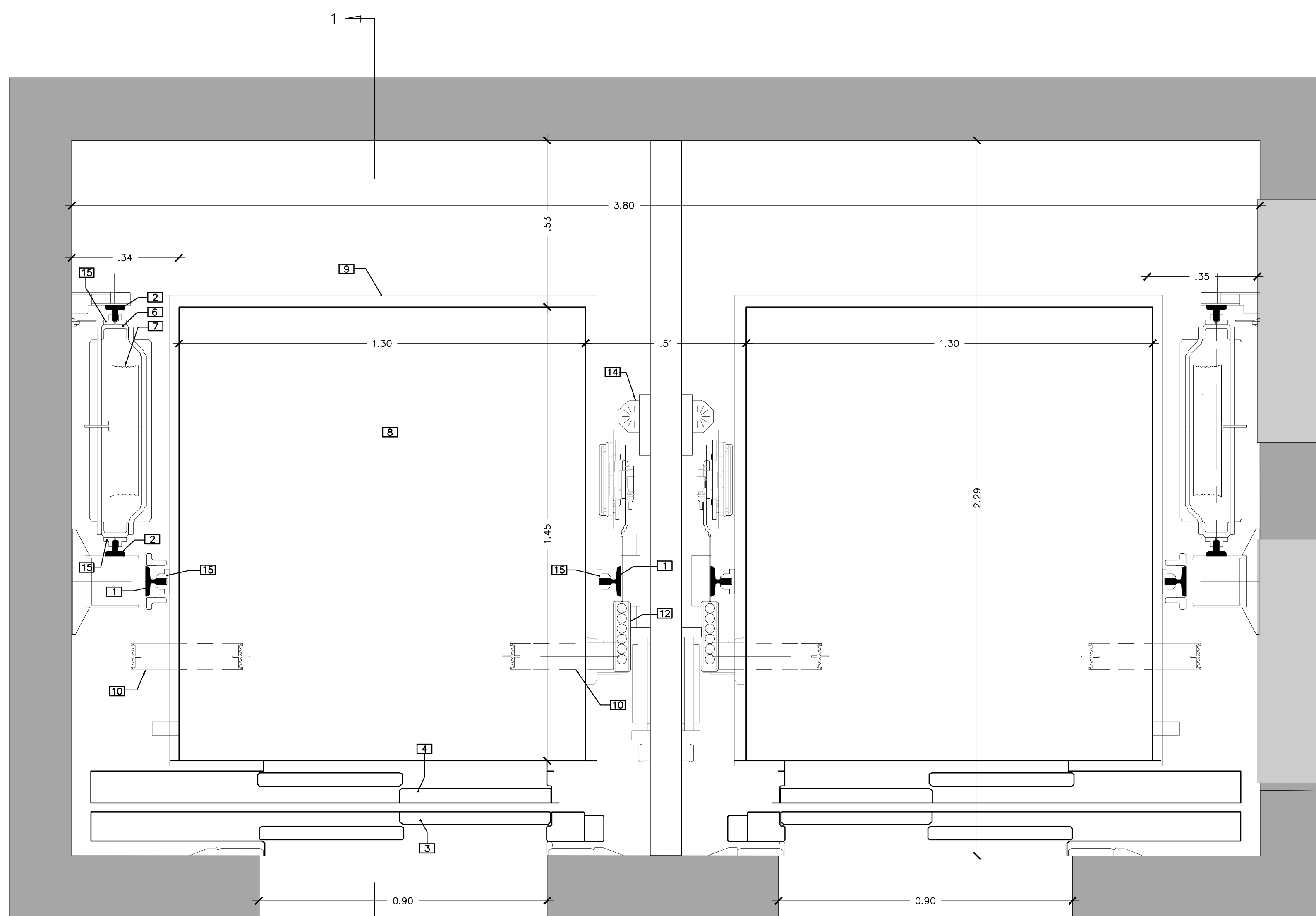
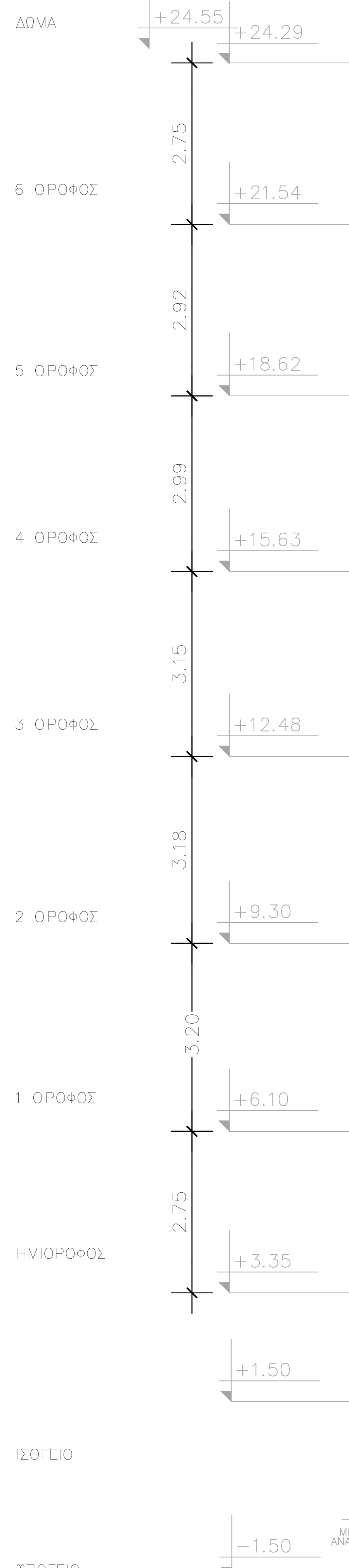


The technical drawing illustrates a staircase railing system. The left portion shows a side elevation of the railing assembly, while the right portion shows a top-down view of the same section.

- Side Elevation Components:**
  - 1**: Handrail profile.
  - 2**: Vertical post or baluster.
  - 3**: Horizontal rail segment.
  - 4**: Bracket or support piece.
  - 5**: Base plate or mounting bracket.
  - 6**: Small vertical pin or screw.
  - 7**: End cap or decorative finial.
  - 8**: Wall-mounted bracket.
  - 9**: Glass panel or infill.
  - 10**: Stair stringer or wall edge.
  - 11**: Tread or step surface.
  - 12**: Railing end connector or cap.
  - 13**: Mounting hardware or bolt.
  - 14**: Base plate or mounting bracket.
  - 15**: Wall-mounted bracket.
  - 16**: Glass panel or infill.
  - 17**: End cap or decorative finial.
  - 18**: Small vertical pin or screw.
  - 19**: Base plate or mounting bracket.
  - 20**: Wall-mounted bracket.
  - 21**: Glass panel or infill.
  - 22**: End cap or decorative finial.
  - 23**: Small vertical pin or screw.
  - 24**: Base plate or mounting bracket.
  - 25**: Wall-mounted bracket.
  - 26**: Glass panel or infill.
  - 27**: End cap or decorative finial.
  - 28**: Small vertical pin or screw.
  - 29**: Base plate or mounting bracket.
  - 30**: Wall-mounted bracket.
  - 31**: Glass panel or infill.
  - 32**: End cap or decorative finial.
  - 33**: Small vertical pin or screw.
  - 34**: Base plate or mounting bracket.
  - 35**: Wall-mounted bracket.
  - 36**: Glass panel or infill.
  - 37**: End cap or decorative finial.
  - 38**: Small vertical pin or screw.
  - 39**: Base plate or mounting bracket.
  - 40**: Wall-mounted bracket.
  - 41**: Glass panel or infill.
  - 42**: End cap or decorative finial.
  - 43**: Small vertical pin or screw.
  - 44**: Base plate or mounting bracket.
  - 45**: Wall-mounted bracket.
  - 46**: Glass panel or infill.
  - 47**: End cap or decorative finial.
  - 48**: Small vertical pin or screw.
  - 49**: Base plate or mounting bracket.
  - 50**: Wall-mounted bracket.
  - 51**: Glass panel or infill.
  - 52**: End cap or decorative finial.
  - 53**: Small vertical pin or screw.
  - 54**: Base plate or mounting bracket.
  - 55**: Wall-mounted bracket.
  - 56**: Glass panel or infill.
  - 57**: End cap or decorative finial.
  - 58**: Small vertical pin or screw.
  - 59**: Base plate or mounting bracket.
  - 60**: Wall-mounted bracket.
  - 61**: Glass panel or infill.
  - 62**: End cap or decorative finial.
  - 63**: Small vertical pin or screw.
  - 64**: Base plate or mounting bracket.
  - 65**: Wall-mounted bracket.
  - 66**: Glass panel or infill.
  - 67**: End cap or decorative finial.
  - 68**: Small vertical pin or screw.
  - 69**: Base plate or mounting bracket.
  - 70**: Wall-mounted bracket.
  - 71**: Glass panel or infill.
  - 72**: End cap or decorative finial.
  - 73**: Small vertical pin or screw.
  - 74**: Base plate or mounting bracket.
  - 75**: Wall-mounted bracket.
  - 76**: Glass panel or infill.
  - 77**: End cap or decorative finial.
  - 78**: Small vertical pin or screw.
  - 79**: Base plate or mounting bracket.
  - 80**: Wall-mounted bracket.
  - 81**: Glass panel or infill.
  - 82**: End cap or decorative finial.
  - 83**: Small vertical pin or screw.
  - 84**: Base plate or mounting bracket.
  - 85**: Wall-mounted bracket.
  - 86**: Glass panel or infill.
  - 87**: End cap or decorative finial.
  - 88**: Small vertical pin or screw.
  - 89**: Base plate or mounting bracket.
  - 90**: Wall-mounted bracket.
  - 91**: Glass panel or infill.
  - 92**: End cap or decorative finial.
  - 93**: Small vertical pin or screw.
  - 94**: Base plate or mounting bracket.
  - 95**: Wall-mounted bracket.
  - 96**: Glass panel or infill.
  - 97**: End cap or decorative finial.
  - 98**: Small vertical pin or screw.
  - 99**: Base plate or mounting bracket.
  - 100**: Wall-mounted bracket.
- Top View Components:**
  - 1**: Handrail profile.
  - 2**: Vertical post or baluster.
  - 3**: Horizontal rail segment.
  - 4**: Bracket or support piece.
  - 5**: Base plate or mounting bracket.
  - 6**: Small vertical pin or screw.
  - 7**: End cap or decorative finial.
  - 8**: Wall-mounted bracket.
  - 9**: Glass panel or infill.
  - 10**: Stair stringer or wall edge.
  - 11**: Tread or step surface.
  - 12**: Railing end connector or cap.
  - 13**: Mounting hardware or bolt.
  - 14**: Base plate or mounting bracket.
  - 15**: Wall-mounted bracket.
  - 16**: Glass panel or infill.
  - 17**: End cap or decorative finial.
  - 18**: Small vertical pin or screw.
  - 19**: Base plate or mounting bracket.
  - 20**: Wall-mounted bracket.
  - 21**: Glass panel or infill.
  - 22**: End cap or decorative finial.
  - 23**: Small vertical pin or screw.
  - 24**: Base plate or mounting bracket.
  - 25**: Wall-mounted bracket.
  - 26**: Glass panel or infill.
  - 27**: End cap or decorative finial.
  - 28**: Small vertical pin or screw.
  - 29**: Base plate or mounting bracket.
  - 30**: Wall-mounted bracket.
  - 31**: Glass panel or infill.
  - 32**: End cap or decorative finial.
  - 33**: Small vertical pin or screw.
  - 34**: Base plate or mounting bracket.
  - 35**: Wall-mounted bracket.
  - 36**: Glass panel or infill.
  - 37**: End cap or decorative finial.
  - 38**: Small vertical pin or screw.
  - 39**: Base plate or mounting bracket.
  - 40**: Wall-mounted bracket.
  - 41**: Glass panel or infill.
  - 42**: End cap or decorative finial.
  - 43**: Small vertical pin or screw.
  - 44**: Base plate or mounting bracket.
  - 45**: Wall-mounted bracket.
  - 46**: Glass panel or infill.
  - 47**: End cap or decorative finial.
  - 48**: Small vertical pin or screw.
  - 49**: Base plate or mounting bracket.
  - 50**: Wall-mounted bracket.
  - 51**: Glass panel or infill.
  - 52**: End cap or decorative finial.
  - 53**: Small vertical pin or screw.
  - 54**: Base plate or mounting bracket.
  - 55**: Wall-mounted bracket.
  - 56**: Glass panel or infill.
  - 57**: End cap or decorative finial.
  - 58**: Small vertical pin or screw.
  - 59**: Base plate or mounting bracket.
  - 60**: Wall-mounted bracket.
  - 61**: Glass panel or infill.
  - 62**: End cap or decorative finial.
  - 63**: Small vertical pin or screw.
  - 64**: Base plate or mounting bracket.
  - 65**: Wall-mounted bracket.
  - 66**: Glass panel or infill.
  - 67**: End cap or decorative finial.
  - 68**: Small vertical pin or screw.
  - 69**: Base plate or mounting bracket.
  - 70**: Wall-mounted bracket.
  - 71**: Glass panel or infill.
  - 72**: End cap or decorative finial.
  - 73**: Small vertical pin or screw.
  - 74**: Base plate or mounting bracket.
  - 75**: Wall-mounted bracket.
  - 76**: Glass panel or infill.
  - 77**: End cap or decorative finial.
  - 78**: Small vertical pin or screw.
  - 79**: Base plate or mounting bracket.
  - 80**: Wall-mounted bracket.
  - 81**: Glass panel or infill.
  - 82**: End cap or decorative finial.
  - 83**: Small vertical pin or screw.
  - 84**: Base plate or mounting bracket.
  - 85**: Wall-mounted bracket.
  - 86**: Glass panel or infill.
  - 87**: End cap or decorative finial.
  - 88**: Small vertical pin or screw.
  - 89**: Base plate or mounting bracket.
  - 90**: Wall-mounted bracket.
  - 91**: Glass panel or infill.
  - 92**: End cap or decorative finial.
  - 93**: Small vertical pin or screw.
  - 94**: Base plate or mounting bracket.
  - 95**: Wall-mounted bracket.
  - 96**: Glass panel or infill.
  - 97**: End cap or decorative finial.
  - 98**: Small vertical pin or screw.
  - 99**: Base plate or mounting bracket.
  - 100**: Wall-mounted bracket.

Dimensions are indicated as follows:

- Overall height: 1.40 m.
- Handrail diameter: 40 mm.
- Post diameter: 40 mm.
- Base plate width: 100 mm.
- Wall bracket width: 100 mm.
- Glass panel width: 100 mm.
- Stair tread width: 100 mm.
- Stringer width: 100 mm.
- Railing end connector width: 100 mm.
- Mounting hardware width: 100 mm.
- Base plate length: 100 mm.
- Wall bracket length: 100 mm.
- Glass panel length: 100 mm.
- Stair tread length: 100 mm.
- Stringer length: 100 mm.
- Railing end connector length: 100 mm.
- Mounting hardware length: 100 mm.



ΤΡΟΜΗΝΗΜΑ	
13	ΘΑΝΕΤΕ Τ ΘΑΜΑΤΟ
14	ΘΑΝΕΤΕ Τ ΑΝΤΙΒΑΡΟ
15	ΘΥΓΕΤΕ ΠΡΟΣΕΙΣ ΠΑΝΘΕΚΟΝΙΣΣΕ
16	ΘΥΓΕΤΕ ΘΑΜΑΤΟ ΠΑΝΘΕΚΟΝΙΣΣΕ
17	ΑΝΤΙΒΑΡΟ
18	ΚΟΡΟ ΑΝΤΙΒΑΡΟ
19	ΤΡΟΧΑΙΑ ΚΟΡΟΤ ΑΝΤΙΒΑΡΟ
20	ΘΑΜΑΤΟ
21	ΓΛΑΦΟ ΑΝΑΡΤΗΣΕΙΣ ΘΑΜΑΤΟ
22	ΤΡΟΧΑΙΑ ΑΝΑΡΤΗΣΕΙΣ ΘΑΜΑΤΟ
23	ΣΤΡΑΤΙΔΕΥΟΜΕΝΑ ΑΝΑΡΤΗΣΕΙΣ
24	ΣΤΡΑΤΙΔΕΥΟΜΕΝΑ ΑΝΑΡΤΗΣΕΙΣ ΣΤΡΑΤΙΔΕΥΟΜΕΝΟΝ
25	ΚΙΝΗΤΗΜΕΤΑ ΜΗΧΑΝΕΙΣ (ΚΙΝΗΤΗΡΕΣ-ΤΡΟΧΑΙΑ)
26	ΑΙΣΘΕΤΕΣ ΠΡΟΣΕΙΣ
27	ΟΛΣΕΝΤΗΡΑΙ
28	ΠΡΟΕΚΡΟΤΕΤΗΡΑΙ ΘΑΜΑΤΟ
29	ΠΡΟΕΚΡΟΤΕΤΗΡΑΙ ΑΝΤΙΒΑΡΟ

[illegible]

The left drawing is a side elevation of a building facade. It shows a wall with a door and a window. The door is located on the left side, and the window is on the right. The wall has a thickness of 2.00. The door has a width of 1.50. The window has a height of 2.00. The wall is labeled with 'ИЗОПЛОЩЕ' at the top and 'ИЗОПЛОЩЕ' at the bottom. The door is labeled with 'ДВ' and the window with 'ОК'.

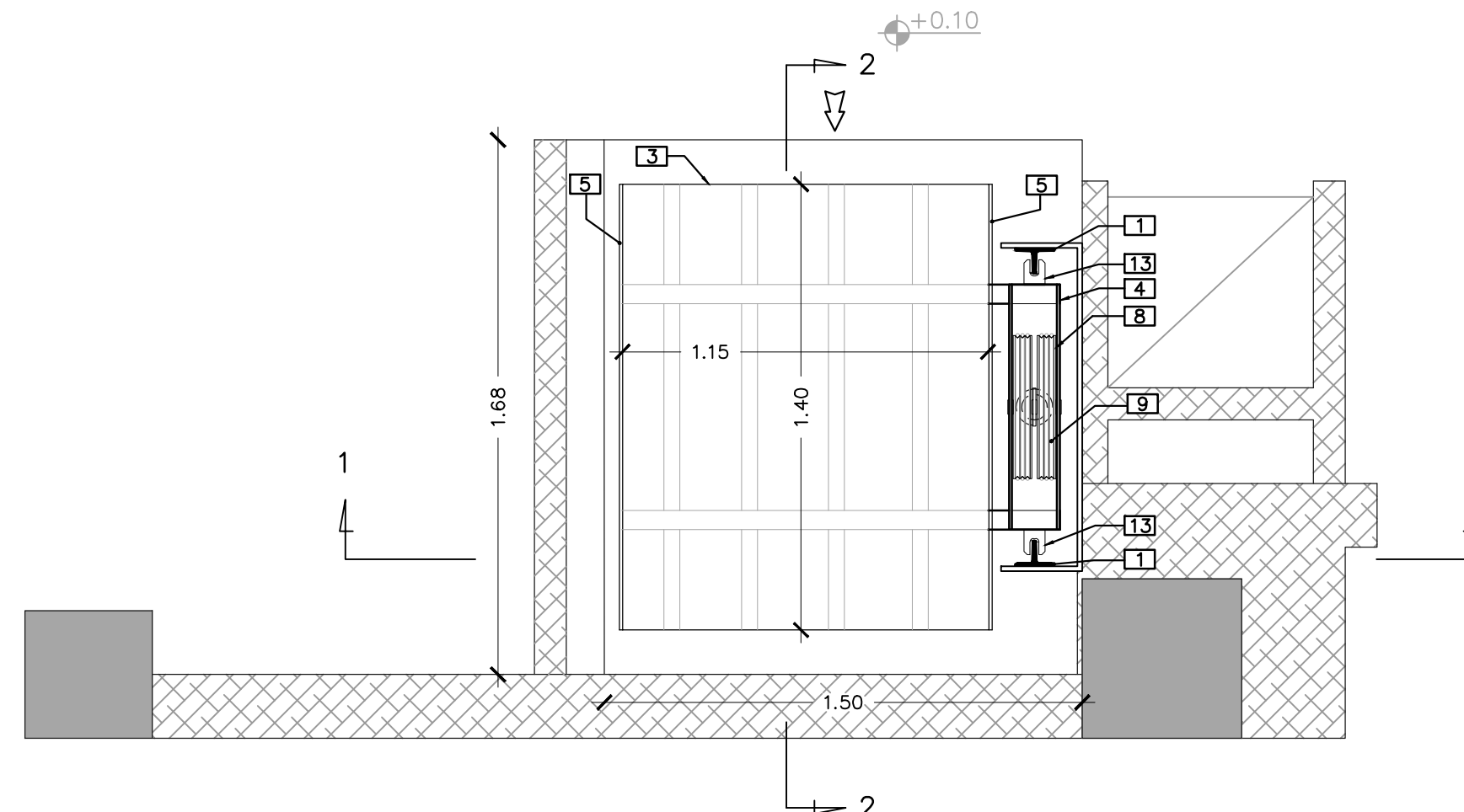
The right drawing is a front elevation of a building facade. It shows a wall with a door and a window. The door is located on the left side, and the window is on the right. The wall has a thickness of 2.00. The door has a width of 1.50. The window has a height of 2.00. The wall is labeled with 'ИЗОПЛОЩЕ' at the top and 'ИЗОПЛОЩЕ' at the bottom. The door is labeled with 'ДВ' and the window with 'ОК'.

ANABATORIO ΦΟΡΤΙΩΝ  
ΤΟΜΗ 1-1 ΦΡΕΑΤΙΟΥ  
ΚΥΜΑΚΑ 1:50

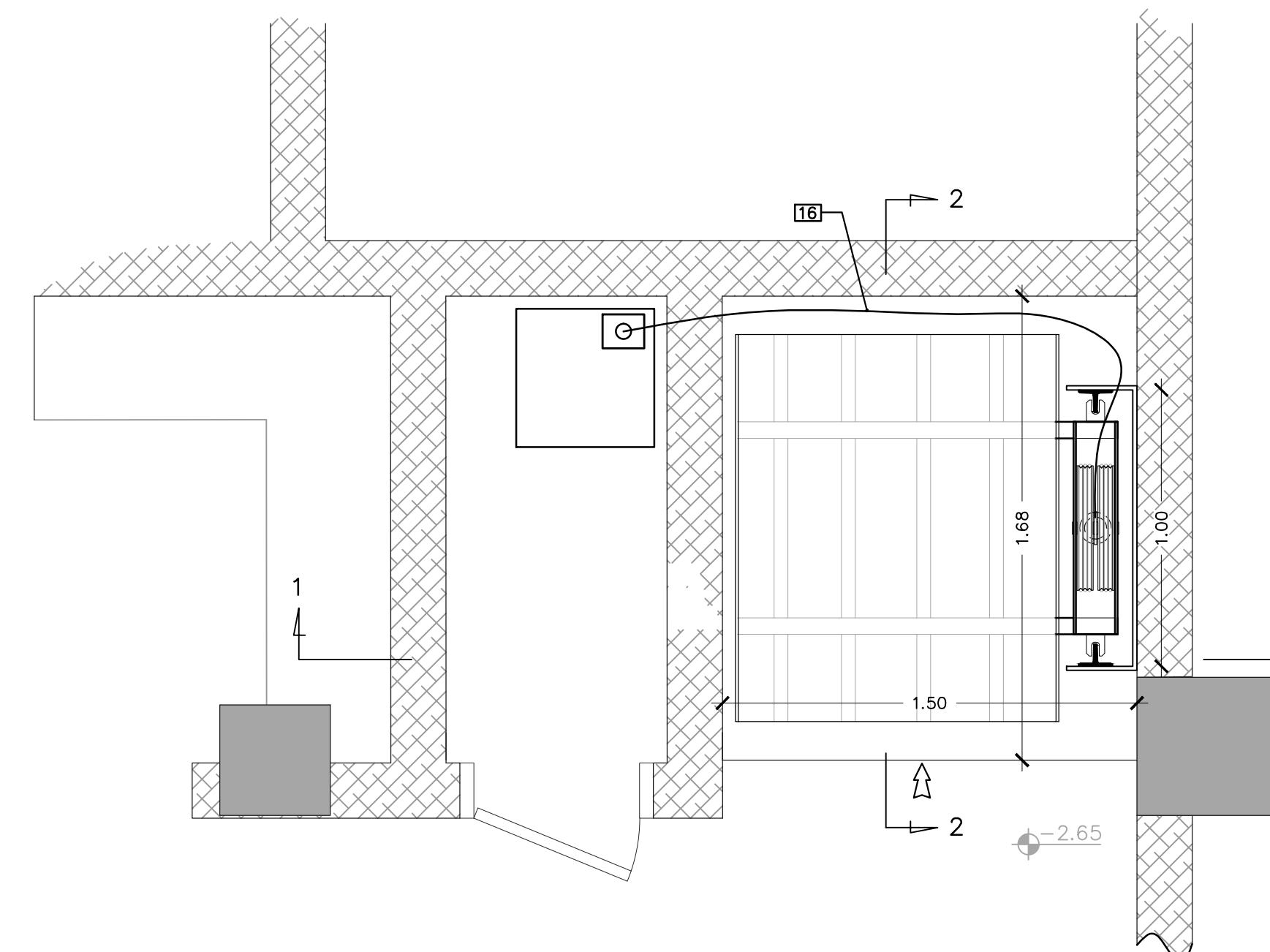
ANABATOPIO ΦΟΡΤΙΩΝ  
ΤΟΜΗ 2-2 ΦΡΕΑΤΙΟΥ  
ΚΥΜΑΚΑ 1:50

ΤΟΜΗΝΗΜΑ	
[1]	ΟΜΦΟΣ 2 ΠΛΑΤΕΡΑΣ
[2]	ΣΤΡΩΣ ΦΡΕΑΤΟΣ ΜΑΚΡΟΚΟΙΛΩΤΕΣ ΤΥΠΟΣ ΡΟΛΛΑ
[3]	ΠΑΡΟΧΟΙ ΑΝΑΒΟΡΕΣ (ΦΟΡΟΣ)
[4]	ΠΛΑΙΣΙΟ ΑΝΑΡΤΗΣΗΣ ΠΛΑΤΕΡΑΣ
[5]	ΠΛΑΙΣΙΟ ΠΡΟΤΕΤΑΙΝΩΝ ΠΛΑΤΕΡΑΣ
[6]	ΜΕΤΑΛΛΙΚΕΣ ΚΑΘΙΣΕΣ ΠΡΟΤΕΤΑΙΝΑ
[7]	ΚΟΛΟΚΟΚΚΟΙ ΣΠΙΛΙΣΕΣ ΚΤΑΝΑΡΕΣ-ΕΜΒΟΛΟΙ
[8]	ΤΡΟΧΑΙΑ
[9]	ΣΤΡΑΤΗΓΕΣΟΝΙΑ ΑΝΑΡΤΗΣΗΣ
[10]	ΣΤΡΑΤΗΜΑΤΑ ΑΝΑΡΤΗΣΕΩΣ ΣΤΡΑΤΗΓΕΣΟΝΙΩΝ
[11]	ΜΕΚΑΝΟΜΕΣ ΑΝΤΙΛΑΣ
[12]	ΑΠΕΡΕΣΕΣ ΦΡΕΑΤΟΣ
[13]	ΟΔΗΓΗΤΗΡΙΟ
[14]	ΚΤΑΝΑΡΕΣ
[15]	ΕΜΒΟΛΟ
[16]	ΣΥΝΘΑΝΑ ΤΡΟΦΟΔΟΣΙΑ ΛΑΙΟΥ
[17]	ΑΝΤΙΜΕΤΩΣ ΣΤΡΗΠΣΕΩΣ ΜΕ ΥΡΑ

ΤΕΧΝΙΚΑ ΧΑΡΑΚΤΗΡΙΣΤΙΚΑ	
ΘΑΛΟΣ ΑΥΤΟΡΡΙΣΗΣ	ΕΛΑΦΥΡΡΕΚΤΟ
ΟΜΟΙΟΜΟ ΚΟΡΙΤΙ	1000kg ΚΟΡΙΤΙΟΝ
ΣΤΑΙΕΙΣ	2
ΣΑΡΟΦΟΝ	2,75 m
ΜΑΥΤΕΡΙΑ	0,15 m
ΒΕΛΗ ΜΑΧΑΙΡΟΕΤΕΡΑ	400
ΑΝΤΙΣΤΑΣΗ ΠΡΟΣΩΤΕ	1,50 x 1,68 m
ΑΝΤΙΣΤΑΣΗ ΠΑΡΩΤΕΡΑ	1,50 x 1,40 m
ΕΠΙΣΤΡΟΦΗ ΣΑΡΟΦΟΝ	1,5x2,00 m ΤΡΙΤΟΥ ΠΑΝΟΣ
ΣΥΣΤΗΜΑ ΑΝΤΙΣΤΑΣΗΣ	3571 480-0
ΕΠΙΣΤΡΟΦΗ ΑΝΤΙΣΤΑΣΗΣ ΕΜΒΛΟΣ	3571 480-0
ΜΑΚΡΟΣ ΕΜΒΛΟΣ	1,300 m
ΠΡΟΣΩΤΗ ΑΝΤΙΣΤΑΣΗ	22,62 t/m <sup>2</sup>
ΟΜΟΙΟΤΗΤΕΣ ΕΠΙΣΤΡΟΦΗΣ	21 t/m <sup>2</sup>
ΣΑΡΟΦΟΝ	125x32x6 mm
ΠΡΟΣΩΤΗ	1 x 450 mm
ΑΝΤΙΣΤΑΣΗ ΠΡΟΣΩΤΗΣ	440 mm / 6280 mm <sup>3</sup>
ΑΝΤΙΣΤΑΣΗ ΠΑΡΩΤΗΣ	6 x 475mm / 6x150AL
ΑΝΤΙΣΤΑΣΗ ΠΑΡΩΤΗΣ	220N / 300N
ΤΑΧΗ ΧΕΙΡΙΣΜΟΥ	24V DC
ΑΥΤΟΡΡΙΣΤΑ	PUSH BUTTON



ΚΑΤΟΨΗ ΦΡΕΑΤΙΟΥ ΣΤΟ ΙΣΟΓΕΙΟ  
ΚΥΜΑΚΑ 1:20



ΚΑΤΟΨΗ ΦΡΕΑΤΙΟΥ ΣΤΟ ΥΠΟΓΕΙΟ  
ΚΝΗΜΑΚΑ 1:20

[illegible][illegible]